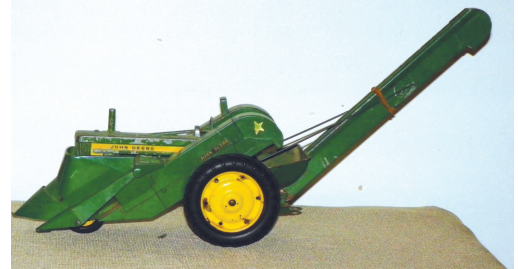
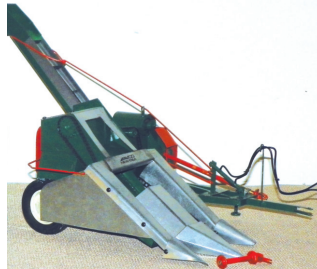


THE LARRY WHEATLEY ESTATE TOY COLLECTION AUCTION

Farm Toys - Farm Memorabilia - Tools - Other Items
Saturday, July 10, 2021 - 10:00 A.M.

Highland Co. Fairgrounds: 604 John St., Hillsboro, Ohio 45133



John Deere: 70 row crop; 7020; X324 & 620i; B; 8220; L; 60; 330; 62 w/plow; 1010; 520 hi crop; 3520 sugarcane harvester; 70 FFA; 720 w/blade; 530; vintage 24t square baler; vintage 620 w/picker; 7520; B 1/8 scale; Custom Horses & JD Reaper; 430LP; HWH; 830 Rice Special; 730 AG hi crop; AO orchard; 420V; A hi crop; 4020 FFA; 3020 orchard; 730 hi crop; GM; 750 standard; 730 standard; 620 -720 - 820 industrial; 630; 2520 hi crop; 8RX 410; 8400R; 55 plow; MT w/sickle mower; 8010; 6215R; 9620 RX; 4520 "Silver Columbus Edition" 4320; 40 & 70; 50 & 60; L w/planter; 62 w/cultivator; 830 & 4020 200th birthday; 620 picker/sheller; vintage manure spreader; GP; AR; 2520; Model E engine; D; 2010; model 44 plows on steel & rubber; 45 combine w/10 corn head; Model 101; 1590 drill; JD Dain; model 55ABH plow; 4010; BW; 80; FB Grain Drill; 5020; 12A Combine; 1600 haybine; Disk-harrow 1/8; 60 WF;(2) vintage 4 bottom plows; 9400 tractor; Waterloo boy; 4x2 gator; 2755 w/loader; Vintage trip loader; 30 row custom planter; Vintage 112 chuck wagon; 80 "Columbus Ohio"; Vintage 3010; 200 picker; cast 2 bottom plow; 9600 combine; S670; 6500 sprayer (damaged); Custom Corn Picker; Vintage snowmobile; 856 cultivators; 220 disk. **New Holland:** 8260; 100th Ann. square baler; Boomer; **Case IH:** 7010 combine "Gold" 1/32; 9250 combine 1/32; gravity wagon; 380 magnum 1/32, red, silver & gold; 620 quad trac 1/32; 9240 combine 1/32; Steam Engine; LB 434 Square baler; 7250 Magnum Mark 50; 380 Magnum LVT; 440 QuadTrac; MX 270; 7120; 7130; 1680 combine. **Allis Chalmers:** D-15 w/ loader; 190 XT; G w/plow; 440; 7080 triples; WD 45 w/wagon; Roto Baler; Franklin Mint All Crop 60 Combine; Franklin Mint WC. **Case:** VAC; 2294; L; HD 2 bottom plow; 970 Black Knight. **IH:** 4 bottom plow NIB; Cub w/planter; M White Demonstrator 1/8; 300 w/planter; 460 restoration set; 350 gas; 450 w/loader; C white demonstrator; 251 planter; 340 gas w/plow; 350 w/loader; 40V w/loader; No. 82 combine; C; 450 gas w/ cultivators; 400 gas w/ cultivator; Super MTA; Super m w/picker; 300 w/ sprayer; Cub; F-12; 560 Demonstrator; McCormick square baler; Super A; 340 gas signed by Max Armstrong; (2) 544; 886; 140; 460U; 230; 560 hi clear; Hydro "Gold"; 560 w/ 144 cultivator; 100 Hydro; Irwin's Case Threshing Machine; McCormick Threshing Machine; 660; 1586 w/loader; Backhoe; 1466 Turbo; WD9. **Massey Harris:** 44 special; Pony. **Massey Ferguson:** 1155 Spirit of America. **Ford:** 900; N series w/plow; Golden Jubilee. **White:** 2-135 MFWD. **Oliver:** 1750 gas; 1955 power assist; Super 99; Super 77; 2255; Super 88 w/ cultivator; Franklin Mint Super 99. **Agco:** 8630. **TruScale:** Tractor w/picker; auger; 2 bottom plow; disk; grain drill. **Other:** Custom NI 2 row pull type picker; Kinze 3300 planter; Big Bud 16V-747 1/32 factory & field editions; Large wooden tractor, manure spreader & pull type combine (work in progress); wooden tractor (JD A) & wooden combine (CIH) approx. 1/16th made by Larry; Deutz Allis 9150; MM special edition; Great Plains drill; MM two star crawler; Bush Hog 2615 Legend; Antique corn sheller; Froelich; MM U; Mamod Steam Tractor; Steam power plant w/ wood working tools. **Precision Series:** JD 4020 w/ 237 picker; JD B unstyled; 7800 "Elite" "Gold"; Waterloo; JD F145H; JD hay wagon; JD Patio Series 140; JD 9750 Combine; JD 24T square baler; JD 8020; JD 720 w/ 80 blade & 45 loader; JD A w/ 290 cultivator; JD 4020 NF; JD 620LP; JD 140 set in case; JD 494A Planter; JD 9410T; JD 5010; IH 3588 2+2; Farmall 400 w/ cultivators; Farmall F-20; Farmall 560 w/ 2MH Picker; Farmall Super M; Farmall F-20; Farmall M; Farmall 1206; Farmall MD w/ loader; AC D-17 w/NI picker. **JD Memorabilia:** Signs; Lamps; Clocks; Watches; knives; tins; rain gauges; figurines; pictures; canister set; custom cane; yardstick from Burch Tractor Hillsboro Ohio; John Deere Pith helmet; serving trays and many other pieces. **Tools & Other Items:** Shop Smith; Dewalt Planer; Drill Press; band saw; Craftsmen 10" radial arm saw w/Lasertrac; air compressor; tool chest; bench grinder; Shop Vac; Drills; Snap On wrenches; C clamps; air tools; 2 ton chain hoist; saws; lots of hand tools; tool cart; Delta Planer; wheel barrow; lumber; 2 hospital beds; large showcase; hardware of all kinds; 1950's Riding Mower and many other items.

Note: Larry was well-known for his woodworking skills & farm toy collection. He was a longtime member of the Southwestern Ohio Farm Toy Club. Good Collection of farm toys, many are new in the box and of high quality, some hard to find and unusual pieces. Live Online Bidding is available for farm toys, please visit: <https://www.rickwilliamsauctionco.hibid.com> for more information. Farm Toy Cataloged auction will begin promptly at 10:00 A.M. Other items will sell in a separate ring beginning at 11:00 A.M. so bring a friend! For more pictures visit us at www.auctionzip.com #5512.

TERMS: Cash or check with Proper ID. Credit Cards are accepted with a 4% Convenience Charge. Food Available.



Rick WILLIAMS
Auction Company, LLC
(937) 393-9447 • 7783 St. Rt. 138 • Hillsboro, Ohio 45133
www.rickwilliamsauctionco.com

AUCTIONEERS:
Rick Williams, Brad Williams,
Chip Yochum, & Troy Martin, Apprentice
Lisa Boyd, Executrix of the
Estate of James Larry Wheatley
HCPC 20211050 Sue Davis, Atty for the Estate